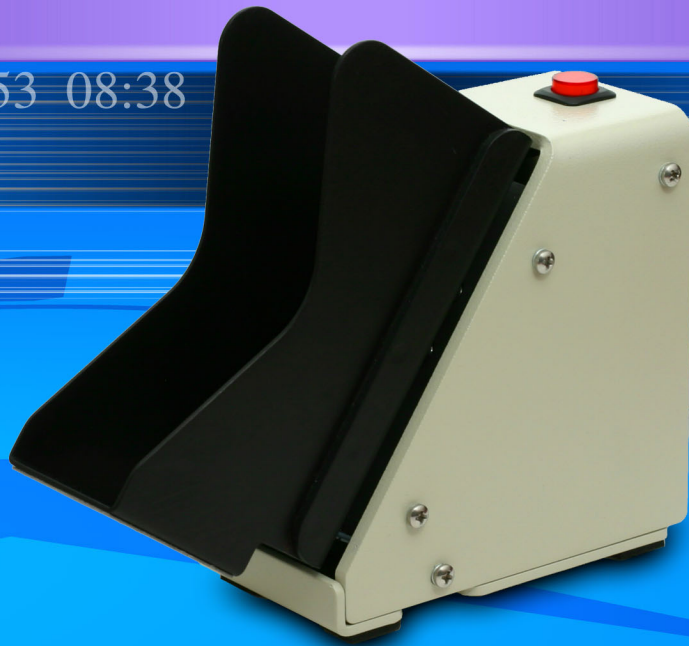


06:53 08:38

12:20



# MJ-1000

# Automatic Check Jogger

## Features

- **Efficient and Reliable.** Takes less than 8 seconds to reliably jog a batch of checks.
- **Quiet operation.** Noise level is less than 53 dBA.
- **Very small footprint.** Less than a size of a personal check.
- 250 checks tray capacity.
- One-touch, automatic, timer controlled operation.
- Automatic or manual control of the jogging time.

## Dimensions:

**Width:** 2.8 Inches  
**Height:** 6.4 Inches  
**Depth:** 7.4 Inches

**Weight:** 4.2 lb

## Power Adaptor:

**Input:** 100-240VAC,  
50/60Hz, 0.5A  
**Output:** 9VDC, 2.0A,  
18W Max.

For Video Presentation, visit our web site <http://www.sheartech.net>

phone: 818-718-9024  
web: <http://www.sheartech.net>  
e-mail: [info@sheartech.net](mailto:info@sheartech.net)  
Chatsworth, CA 91311 U.S.A.

**Shear Tech**  
innovations in document processing systems